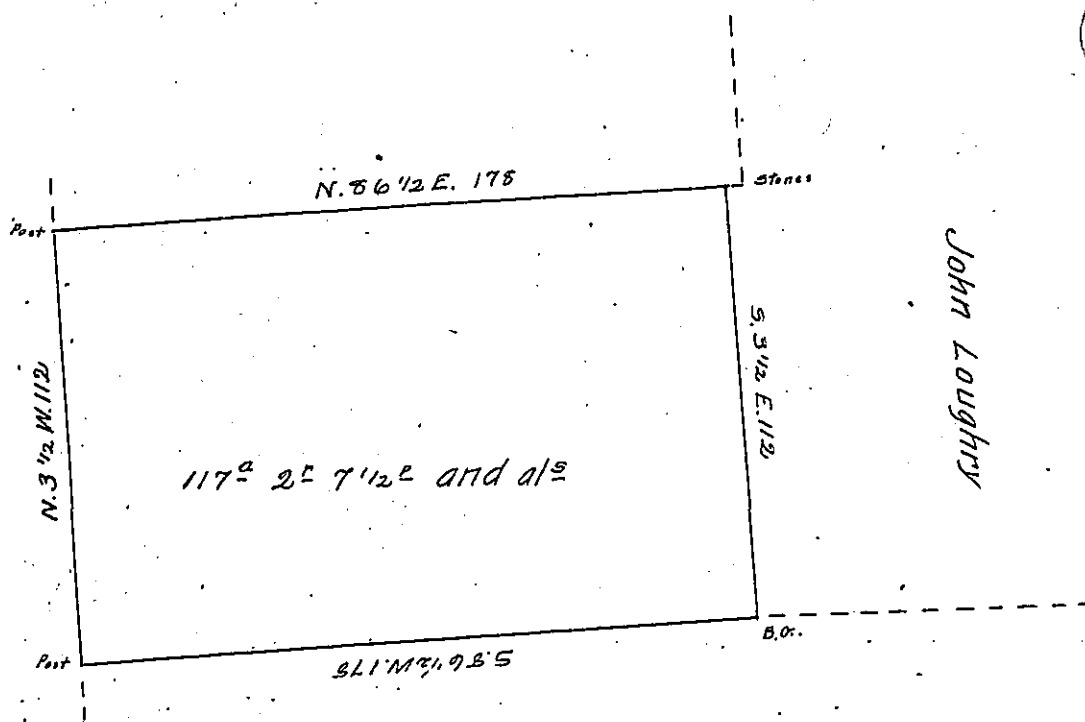


A. Watt.

R. M. Elherty



Depreciation Land

A Draught of a tract of land situate in Indiana township  
 Allegheny County on the waters of Pine Creek containing one  
 hundred <sup>seventeen</sup> ~~sixteen~~ acres two rods <sup>seven & half</sup> ~~four~~ perches and allowance  
 of six p. ch. for roads &c. Surveyed May 25 1829 for Thomas  
 Ash in pursuance of the actual settlement and improvement  
 made by John Loughry on land of which this is a part

Gabriel Hiester Jr. Esq. S. G.

R. Hilands D. S.

Note - The above Survey is within the bounds of Janis district  
 of depreciation land.

Deputy Surveyors Office }  
 Pittsburg 25<sup>th</sup> Augt 1830 }

I approve of the above Survey  
 Geo. McNew D. S.

IN TESTIMONY that the above is a copy of the original remaining on file in  
 the Department of Internal Affairs of Pennsylvania, made  
 conformably to an Act of Assembly approved the 16th day of  
 February, 1833, I have hereunto set my Hand and caused  
 the Seal of said Department to be affixed at Harrisburg,  
 this Twenty-third day of November 1903

*Isaac P. Benson*  
 Secretary of Internal Affairs.